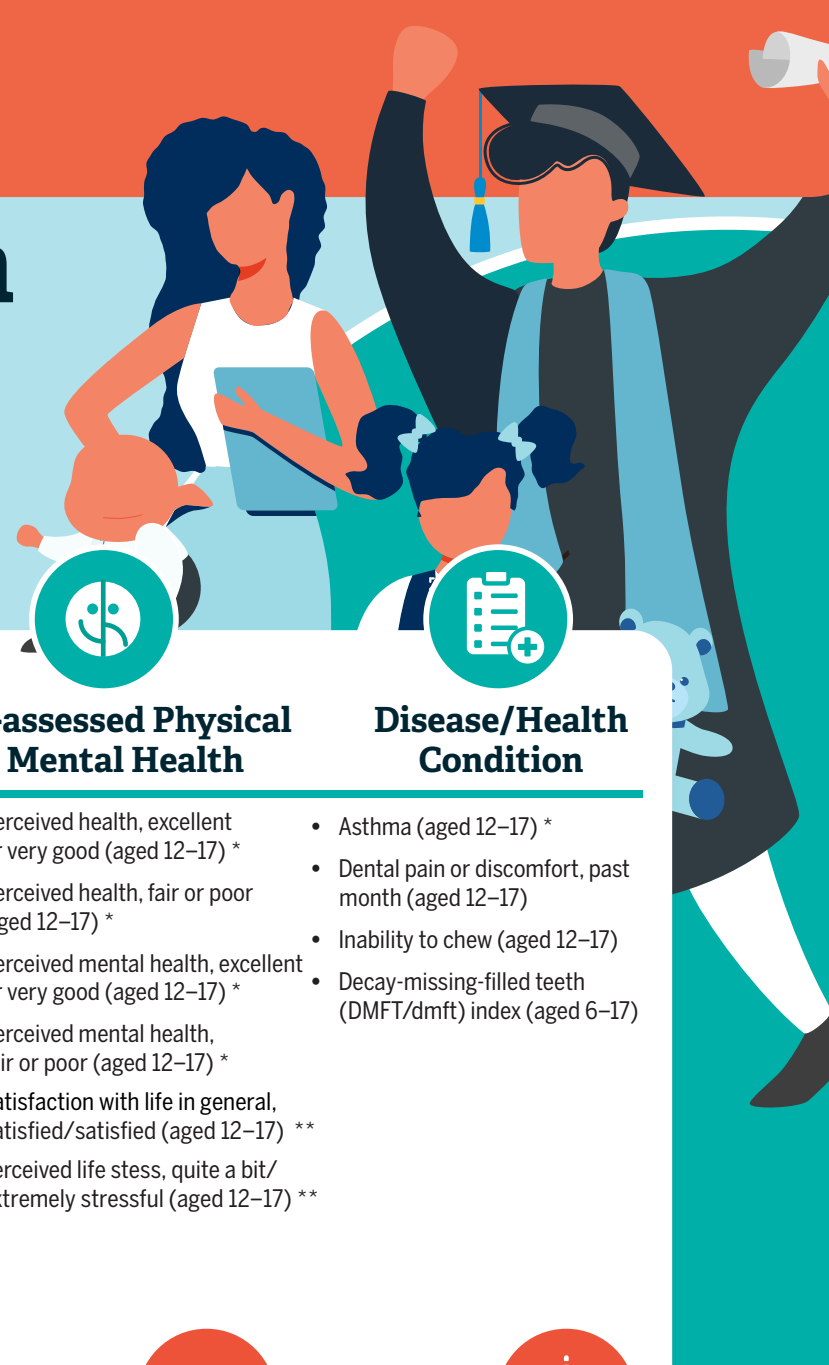


Infants, children, youth and young adults

Available indicators



Health Status



Mortality & Life Expectancy

- Infant mortality
- Infant mortality (at least 500 grams)

Morbidity & Disability

- Had at least one dental injury treated by a dentist in last year (grades 6-10) ◇◇
- Sore mouth or toothaches about once a month or more in the last 6 months (grades 6-10) ◇◇
- Low birth weight
- Preterm births
- Small for gestational age
- Overweight (measured, aged 6-17)
- Obesity (measured, aged 5-17) *
- Obesity (self-reported, grades 6-10)
- Obesity (self-reported, aged 12-17) **
- Functional health, severe or moderate functional impairment (aged 12-17)
- Participation and activity limitation, sometimes or often (aged 12-17)
- Activity-limiting injury, past year (aged 12-17) **
- Injury due to fall, past year (aged 12-17) **
- Injury, past year (aged 12-17) **



Morbidity & Disability



Mental Illness & Suicide

- Mood disorder (aged 12-17) **
- Anxiety disorder (aged 12-17) **
- Suicidal thoughts, lifetime (aged 15-17) **
- Suicidal thoughts, last year (aged 15-17) **
- Suicidal plans, lifetime (aged 15-17) **
- Suicidal plans, last year (aged 15-17) **
- Suicidal attempts, lifetime (aged 15-17) **
- Suicidal attempts, last year (aged 15-17) **



Self-assessed Physical & Mental Health

- Perceived health, excellent or very good (aged 12-17) *
- Perceived health, fair or poor (aged 12-17) *
- Perceived mental health, excellent or very good (aged 12-17) *
- Perceived mental health, fair or poor (aged 12-17) *
- Satisfaction with life in general, satisfied/satisfied (aged 12-17) **
- Perceived life stress, quite a bit/ extremely stressful (aged 12-17) **



Disease/Health Condition

- Asthma (aged 12-17) *
- Dental pain or discomfort, past month (aged 12-17)
- Inability to chew (aged 12-17)
- Decay-missing-filled teeth (DMFT/dmft) index (aged 6-17)

Health Determinants



Health Behaviours

- Alcohol use, heavy drinking (aged 12-17) *
- Frequent present alcohol drinking (grades 6-10)
- Drunkenness in lifetime (grades 6-10)
- Smoking, daily or occasionally (aged 12-17) *
- Current smoking (grades 6-10)
- Tobacco products use (flavoured tobacco, chewing tobacco, snuff, snus, gutkha, hard snuff, e-cigarettes) (grades 6-10)
- E-cigarette use (grades 6-10)
- Cannabis use in past 12 months (grades 9-10)
- Fruit/vegetable consumption, 5 or more times per day (aged 12-17) *
- Physically active (self-reported, aged 12-17) *
- Active transportation to school (walking or biking) (grades 6-10)
- Screen time not meeting guidelines (> 2 hours/day) (grades 6-10)
- Playing outdoors ≥ 2 hours/day (grades 6-10)
- Meeting recommended sleep time in past week (grades 6-10)
- Brushing teeth twice a day or more (grades 6-10) ◇◇



Physical & Social Environment

- Exposure to second-hand smoke at home (aged 12-17) *
- Exposure to second-hand smoke in vehicles or public places, past month (aged 12-17) *
- Sense of community belonging, somewhat or very strong (aged 12-17) *
- Family support (grades 6-10)
- Friend support (grades 6-10)



Working Conditions

- Workplace stress, quite a bit or extremely stressful, past year (aged 15-17) *



Socioeconomic Conditions

- Youth not in employment or education (aged 15-24)



Social Protection

- Daycare centre enrollment (aged 1-5)
- Subsidized care (aged 1-5)
- Non-parental childcare (aged 1-5)



Social Inequities

- Food insecurity, moderate or severe (individuals living in households with food insecurity, aged 12-17) *
- Food insecurity, marginal or moderate or severe (individuals living in households with food insecurity, aged 12-17) **
- Children in low-income families (according to low income cut-off) ◇
- Children in low-income families (according to market basket measure) ◇



Early Childhood Development

- Children vulnerable in at least one domain of early development *
- Children vulnerable in domain of physical health and well-being *
- Children vulnerable in domain of social competence *
- Children vulnerable in domain of emotional maturity *
- Children vulnerable in domain of language and cognitive development *
- Children vulnerable in domain of communication skills and general knowledge *



Health Care

- Contact with medical doctor, past year (aged 12-17) *
- Absence of dental insurance (aged 6-17)
- Contact with dental professional, past year (aged 12-17) *
- Not seen dental professional, past year (aged 6-17)
- Dental insurance coverage (aged 12-17) **
- Talked to a health professional about emotional or mental health, past year (aged 12-17) **
- Have a regular health care provider (aged 12-17) **
- Received at least one type of help for mental health problems (information/medication/counselling/other), past year (aged 12-17) **
- Perceived need fully met for information for mental health problems, past year (aged 12-17) **



Interaction with Justice System

- Charged with crime (aged 12-17)
- Cleared of crime otherwise (aged 12-17)
- Total Crime Severity Index (aged 12-17)
- Violent Crime Severity Index (aged 12-17)

Legend

- * Updated indicator for 2022 edition
- ** New indicator for 2022 edition
- ◇ Updated indicator for 2022 edition (Sept. 2023)
- ◇◇ New indicator for 2022 edition (Sept. 2023)